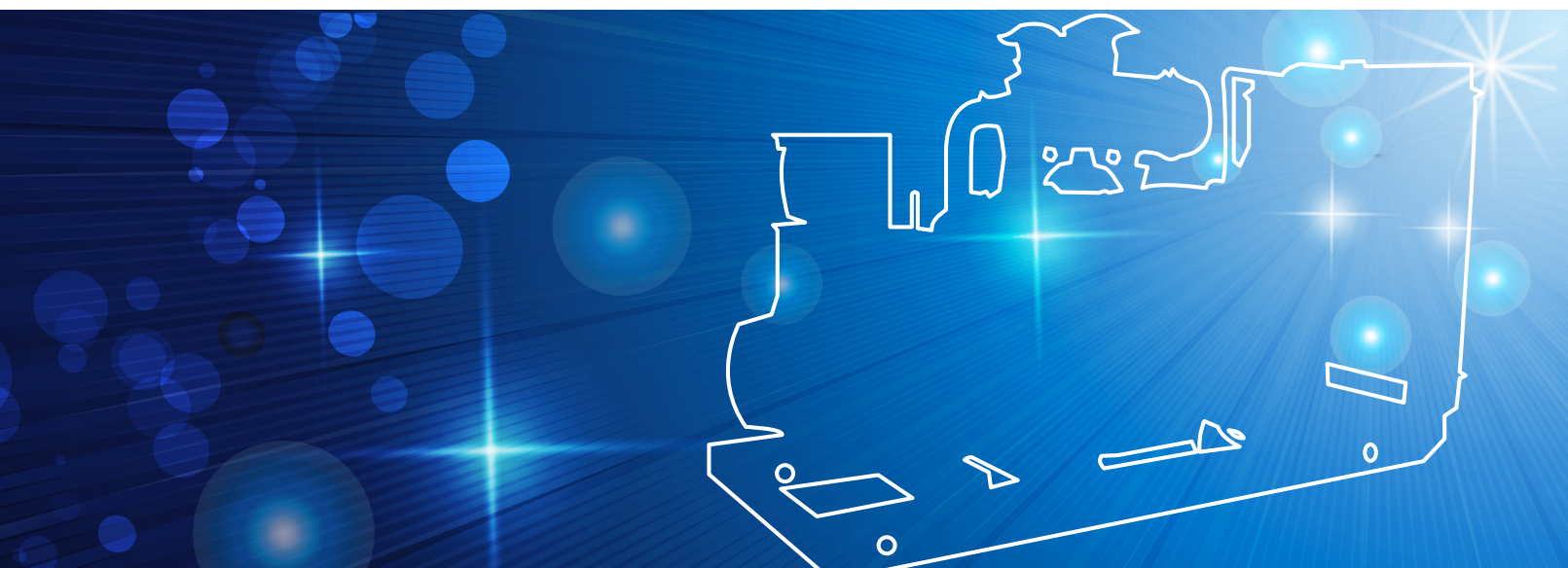


柴油发电机组

Diesel generator set



诚实守信 感恩待人



CONTENTS 目录

01	企业简介	Brief Introduction	01
02	荣誉证书	Certificates	02-03
03	康明斯	Cummins	04-13
	康明斯主机	Propulsion diesel engine	04-07
	康明斯辅机	Auxiliary diesel engine	08-13
04	斯堪尼亚	Scania	14-19
	斯堪尼亚主机	Propulsion diesel engine	14-17
	斯堪尼亚辅机	Auxiliary diesel engine	18-19
05	帕金斯	Perkins	20-21
06	河柴	HND	22-23
07	产品介绍	Product Introduction	24
08	企业荣誉	Enterprise honor	25



企业简介

BRIEF INTRODUCTION

镇江中船现代发电设备有限公司 (CMXD) 成立于2005年12月, 隶属中国船舶工业集团公司 (CSSC), 座落于江苏省镇江市高新技术园区, 是一家集发电机研发、制造及柴油发电机组成套为一体的高新技术企业。

公司作为江苏省高新技术企业, 拥有世界领先的三相无刷恒压同步发电机制造技术, 产品得到世界九大船级社认可, 被国际知名船东、船厂广泛选用于VLCC、VLOC、LNG等高技术船舶。同时, 公司专业于柴油发电机组的成套与销售, 与美国康明斯、瑞典斯堪尼亚、英国帕金斯及河柴动力等开展了广泛的合作, 为客户提供主机、发电机组、轴系、桨动力系统集成, 致力于整体解决方案, 并为海洋工程、大型电站等提供优质产品.此外公司还提供及各类箱式电站, 适用于船用及陆用。

Zhenjiang China Marine Xian-Dai Generating Co., Ltd. (CMXD) was established in November 2005, subordinated to China State Shipbuilding Corporation (CSSC), located in High-tech Garden, Zhenjiang City, Jiangsu Province. It's a high-tech enterprise specialize in generator R&D, manufacturing and diesel gen-set assembly.

As a high-tech enterprise of Jiangsu Province, Our alternators are manufactured according to the international advanced brushless AC synchronous technology. The products are certified by the top 9 classification societies, accepted by many famous shipowners and shipyards around the world, widely applied in high-tech vessels such as VLCC, VLOC, LNG, etc. Our company is specialize in diesel gen-set assembly and sales, we keeps a good relationship with many well-known engine suppliers such as Cummins, Scania, Perkins, HND and so on. We devoted to provide whole solution including main engine, gen-sets, shaft, propeller. Our quality products especially suitable for offshore and large power station, and we also provide various container power station for marine or land use.

荣誉证书 Certificates





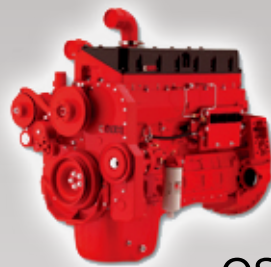
CUMMINS 康明斯主机



QSK



N855



QSM11



6CTA8.3



箱式电站



Cummins Marine Commercial Propulsion Product Line

康明斯商用船主机产品表

kW	BHR	RPM	Engine	Rating
千瓦	英制马力	转速	机型	功率定义
373	500	1800	KTA19-M3	CON
373	500	1800	QSK19-M	CON
395	530	1800	KTA19-M3	CON
447	600	1800	KTA19-M3	CON
447	600	1800	QSK19-M	CON
477	640	1800	KTA19-M3	HD
492	660	1800	QSK19-M	CON
522	700	2100	KTA19-M4	HD
559	750	1600	KTA38-M0	CON
560	750	1800	QSK19-M	HD
567	760	2100	QSK19-M	HD
597	800	1800	KTA38-M0	CON
597	800	2100	QSK19-M	MCD
634	850	1800	KTA38-M0	CON
634	850	1800	K38-M	CON
671	900	1600	KTA38-M1	CON
746	1000	1800	KTA38-M1	CON
746	1000	1800	K38-M	CON
738	1050	1600	KTA38-M2	CON
821	1100	1800	KTA38-M1	HD
895	1200	1800	KTA38-M2	CON
895	1200	1800	QSK38-M	CON
969	1300	1800	KTA38-M2	HD
970	1300	1800	QSK38-M	CON
1007	1350	1900	KTA38-M2	HD
1007	1350	1900	QSK38-M	HD
1007	1350	1950	KTA38-M2	HD
1193	1600	1800	QSK50-M	CON
1342	1800	1900	KTA50-M2	HD
1342	1800	1900	QSK50-M	HD
1398	1875	1950	KTA50-M2	MCD
1491	2000	1600	QSK60-M HPI	CON
1491	2000	1800	QSK60-M HPI	COND
2013	2700	1900	QSK60-M HPI	INT
1491	2000	1600	QSK60-M MCRS	CON
1491	2000	1800	QSK60-M MCRS	COND
2013	2700	1900	QSK60-M MCRS	INT

NOTE: Propulsion ratings also apply to bowthruster and pump applications.

注意：主机功率也适用于艏侧推和泵的应用场合。

* 燃油系统中Electronic表示电控，Mechanical表示机械式。



K19-M

CCEC Marine Main Propulsion

重庆康明斯船用主机

General Specifications 基本规格

Configuration 结构	In-line, 6 cylinder, 4-stroke diesel 直列6缸4冲程	Displacement 排量	19 liters 1150 in 19升 1150英寸
Aspiration 吸气方式	Turbocharged/Aftercooled 涡轮增压中冷式	Bore & Stroke 缸径 & 冲程	159×159mm 6.25×6.25 in
		Fuel System	Pressure Time (PT)

机型	额定功率	额定功率	超负荷功率	功率标定
Model	Rated power Kw/r/min	Rated power HP/r/min	Overload Kw/r/min	Rating
K19-M	373 (1800)	500 (1800)	410 (1858)	持续功率 (CON)
K19-M	410 (2100)	550 (2100)	451 (2175)	中等持续功率 (MCD)
K19-M	447 (1800)	600 (1800)	492 (1858)	持续功率 (CON)
K19-M	477 (1800)	640 (1800)	525 (1858)	重载功率 (HD)

Commercial Ratings 商用功率

Output Power 输出功率			Hz 赫兹	Fuel Cons* 燃油消耗		Rating 功率	Emissions 排放
kW 千瓦	BHP 马力	kWe* 千瓦*		L/hr	gal/hr		
433	580		50	57.9	15.3		IMO2/EPA2
563	755	541	60	73.4	19.1	常载功率	IMO2/EPA2/EU

* kWe reflects the approximate amount of power available when used in a genset configuration.

* kWe 表示当用于发电机组时的，近似的可得到的功率。

General Engine Dimensions 基本发动机尺寸

Dimensions may vary based on selected engine configuration. 尺寸可能会因可选件而略有变化。

Length 长mm (in)	Width 宽mm (in)	Height 高mm (in)	Weight 重kg (lb)
2007	963	1880	2189
(79) KC	(38)	(74)	(4825)

* KC: Keel cooled 用基尔冷却器冷却的

* This product is only available in EPA-or EU-regulated areas.

Contact your local Cummins professional for more information.

这款产品只可用于美国环保署和欧盟规定的区域。如需更多信息请联系当地康明斯专业人士。

KT/KTA38/K38-M

CCEC Marine Main Propulsion

重庆康明斯船用主机

General Specifications **基本规格**

Configuration 结构	V-12、16 cylinder, 4-stroke diesel V型12缸、16缸4冲程
Aspiration 吸气方式	Turbocharged/Aftercooled 涡轮增压/中冷
Displacement排量	38/50 liters 2300/3067in
Bore & Stroke 缸径 & 冲程	159×159mm 6.25×6.25 in
Rotation 转向	Counterclockwise facing flywheel 面向飞轮反时针

柴油机型号	额定功率	功率转速	功率	排放
Engine Type	Power Rating kW(hp)	RPM RPM	Rating	Emissions
KT38-M	543(727)	1800	CON	
KTA38-M0	610(818)	1800	CON	IMO1
KTA38-M1	678(909)	1800	CON	IMO1
KTA38-M2	814(1091)	1800	CON	IMO1
K38-M	596(800)	1800	CON	IMO2
K38-M	671(900)	1600	CON	IMO2
K38-M	746(1000)	1800	CON	IMO2
K38-M	821(1100)	1800	HD	IMO2
K38-M	895(1200)	1800	CON	IMO2
K38-M	1007(1350)	1900	HD	IMO2

Note:CCEC Products are not available in some markets,please check with your local marketing representatives to confirm.

注意：部分地区市场没有CCEC产品，具体情况请向当地康明斯销售人员查询。



康明斯辅机

Cummins

进口康明斯

机组型号	柴油机型号	发电机型号	额定功率	额定电压	额定频率	机组净重	外形尺寸
D.G.SET Type	Engine Type	Generator Type	Rate Output kW	Rated Voltage V	Rated Frequency Hz	Net Weight kg	Overall Dimension (LxWxH)mm
CCFJ60-E	6BT5.9-D(M)	UCM274C	60	400	50	1150	2300x1100x1400
CCFJ70-E	6BT5.9-D(M)	UCM274E	70	400	50	1250	2300x1100x1400
CCFJ100-E	6CT8.3-D(M)	UCM274F	100	400	50	1500	2300x1200x1500
CCFJ120-E	6CT8.3-D(M)	UCM274F	120	400	50	1500	2300x1200x1500
CCFJ140-E	6CTA8.3-D(M)	UCM274H	140	400	50	1600	2400x1200x1500
CCFJ285-E	KTA19-D(M)	HCM534C	285	400	50	3900	3400x1600x2100
CCFJ390-E	KTA19-D(M)	HCM534E	390	400	50	4150	3400x1600x2100
CCFJ490-E	VTA28-D(M)	HCM634G	490	400	50	6100	4000x1900x2700
CCFJ660-E	KTA38-D(M)	LVM634E	660	400	50	7700	4200x2000x3000
CCFJ720-E	KTA38-D(M)	HCM634K	720	400	50	7800	4300x2000x3000
CCFJ760-E	KTA38-D(M)(M1)	HCM634K	760	400	50	7800	4300x2000x3000
CCFJ785-E	KTA38-D(M)(M1)	LVM634F	785	400	50	7900	4300x2000x3000
CCFJ905-E	KTA50-D(M1)	PM734C	905	400	50	9700	4700x2100x3000
CCFJ990-E	KTA50-D(M)(M1)	PM734C	990	400	50	9700	4700x2100x3000
CCFJ70-E	6BT5.9-D(M)	UCM274C	70	450	60	1150	2300x1100x1400
CCFJ90-E	6BT5.9-D(M)	UCM274E	90	450	60	1250	2300x1100x1400
CCFJ155-E	6CTA8.3-D(M)	UCM274H	155	450	60	1600	2400x1200x1500
CCFJ160-E	6CTA8.3-D(M)	UCDM274K	160	450	60	1700	2400x1200x1500
CCFJ220-E	NT855-D(M)	HCM434D	220	450	60	2850	3100x1300x1900
CCFJ260-E	NT855-D(M)	HCM434E	260	450	60	2950	3300x1300x1900
CCFJ320-E	NTA855-D(M)	HCM434F	320	450	60	3000	3300x1300x1900
CCFJ320-E	KTA19-D(M)	HCM434F	320	450	60	3750	3400x1600x2100
CCFJ370-E	KTA19-D(M1)	HCM534C	370	450	60	4000	3400x1600x2100
CCFJ410-E	KTA19-D(M1)	HCM534E	410	450	60	4150	3400x1600x2100
CCFJ430-E	KTA19-D(M)	HCM534E	430	450	60	4150	3400x1600x2100
CCFJ540-E	VTA28-D(M)	HCM534F	540	450	60	5800	4000x1900x2700
CCFJ720-E	KTA38-D(M1)	HCM634H	720	450	60	7600	4200x1600x2200
CCFJ805-E	KTA38-D(M)	HCM634K	805	450	60	8200	4300x2000x3000
CCFJ860-E	KTA38-D(M1)	HCM634K	860	450	60	8300	4200x1600x2200
CCFJ895-E	KTA38-D(M)	HCM634K	895	450	60	8350	4300x2000x3000
CCFJ1015-E	KTA50-D(M1)	PM734C	1015	450	60	10000	4600x1600x2300
CCFJ1090-E	KTA50-D(M)	PM734C	1090	450	60	9700	4700x2100x3000
CCFJ105	QSB7-DM	UCM274F	105	400	50	1600	2200x1200x1500

康明斯辅机

Cummins

进口康明斯

机组型号	柴油机型号	发电机型号	额定功率	额定电压	额定频率	机组净重	外形尺寸
D.G.SET Type	Engine Type	Generator Type	Rate Output kW	Rated Voltage V	Rated Frequency Hz	Net Weight kg	Overall Dimension (LxWxH)mm
CCFJ140	QSB7-DM	UCM274H	140	400	50	1600	2200x1200x1500
CCFJ145	QSB7-DM	UCDM274K	145	400	50	1700	2300x1200x1500
CCFJ230	QSM11-DM	HCM434F	230	400	50	2700	3000x1300x1900
CCFJ320	KTA19-DM1	HCM534D	320	400	50	3900	3400x1600x2100
CCFJ370	KTA19-DM1	HCM534E	370	400	50	4150	3400x1600x2100
CCFJ390	QSK19-DM	HCM534E	390	400	50	4500	3400x1600x2100
CCFJ800	KTA38-DM1	LVM634G	800	400	50	7800	4300x1600x2200
CCFJ900	QSK38-DM	PM734C	900	400	50	10000	4300x1800x2200
CCFJ1005	KTA50-DM1	PM734C	1005	400	50	9700	4700x2100x3000
CCFJ1115	QSK50-DM	PM734C	1115	400	50	11000	4900x1800x2300
CCFJ1440	QSK60-DM	PM734F	1440	400	50	13600	5000x1800x2300
CCFJ80	QSB7-DM	UCM274C	80	450	60	1500	2200x1200x1500
CCFJ95	QSB7-DM	UCM274E	95	450	60	1550	2200x1200x1500
CCFJ110	QSB7-DM	UCM274E	110	450	60	1550	2200x1200x1500
CCFJ125	QSB7-DM	UCM274F	125	450	60	1600	2200x1200x1500
CCFJ165	QSB7-DM	UCDM274K	165	450	60	1700	2300x1200x1500
CCFJ175	6CTA8.3-DM	UCM274H	175	450	60	1600	2400x1200x1500
CCFJ185	QSB7-DM	UCDM274K	185	450	60	1700	2300x1200x1500
CCFJ230	QSM11-DM	HCM434D	230	450	60	2500	3000x1300x1900
CCFJ280	QSM11-DM	HCM434E	280	450	60	2600	3000x1300x1900
CCFJ380	KTA19-DM1	HCM534C	380	450	60	4000	3400x1600x2100
CCFJ440	KTA19-DM1	HCM534E	440	450	60	4150	3400x1600x2100
CCFJ510	QSK19-DM	HCM534F	510	450	60	4550	3400x1600x2100
CCFJ505	QSK19-DM	HCM534E	505	450	60	4500	3400x1600x2100
CCFJ890	KTA38-DM1	HCM634K	890	450	60	8300	4200x1600x2200
CCFJ955	QSK38-DM	PM734C	955	450	60	10000	4300x1800x2200
CCFJ1180	KTA50-DM1	PM734C	1180	450	60	10000	4600x1600x2300
CCFJ1230	QSK50-DM	PM734C	1230	450	60	11000	4900x1800x2300
CCFJ1750	QSK60-DM	PM734F	1750	450	60	13700	5100x1900x2300

图例说明： IMO-TIER-II机型 EPA3或EU3a，非IMO-2排放 仅CCAS
 50(1500rpm) 60Hz (1800rpm)



CCEC 重庆康明斯

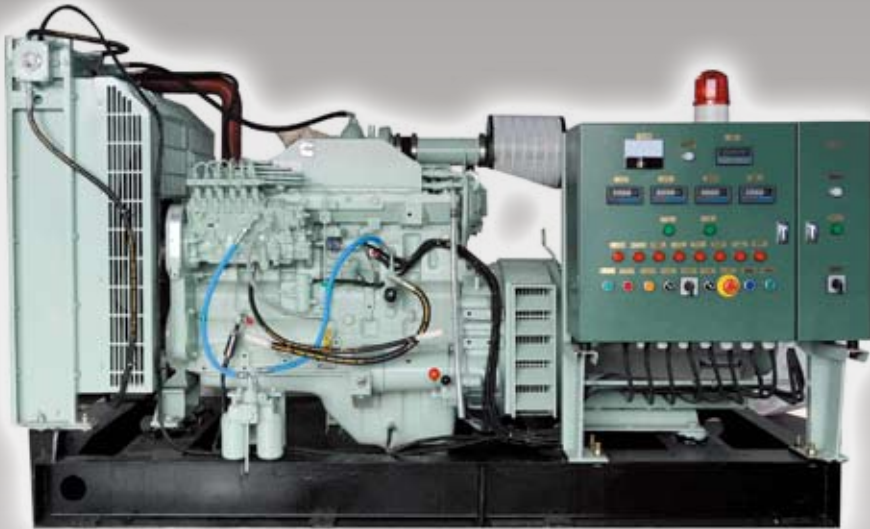


CCEC

重庆康明斯

机组型号	柴油机型号	发电机型号	额定功率	额定电压	额定频率	机组净重	外形尺寸
D.G.SET Type	Engine Type	Generator Type	Rate Output kW	Rated Voltage V	Rated Frequency Hz	Net Weight kg	Overall Dimension (LxWxH)mm
CCFJ150	NT855-D(M)	HCM434C	150	400	50	2650	3100x1300x1900
CCFJ210	NTA855-D(M)	HCM434E	210	400	50	2850	3300x1300x1900
CCFJ250	NTA855-D(M)	HCM434F	250	400	50	3000	3300x1300x1900
CCFJ280	NTA855-D(M)	HCM534C	280	400	50	3200	3300x1300x1900
CCFJ290-E	KTA19-D(M)	HCM534C	290	400	50	3900	3400x1600x2100
CCFJ350-E	KTA19-D(M)	HCM534E	350	400	50	4100	3400x1600x2100
CCFJ390-E	KTA19-D(M)	HCM534E	390	400	50	4150	3400x1600x2100
CCFJ505	KT38-D(M)	HCM634G	505	400	50	7000	4100x1600x2200
CCFJ605	KTA38-D(M)	HCM634H	605	400	50	7500	4200x1600x2200
CCFJ745	KTA38-D(M)	HCM634K	745	400	50	7700	4300x1600x2200
CCFJ805	KTA38-D(M)	LVM634G	805	400	50	7800	4300x1600x2200
CCFJ255	NTA855-D(M)	HCM434E	255	450	60	2850	3300x1300x1900
CCFJ275	NTA855-D(M)	HCM434E/F	275	450	60	2850/3000	3300x1300x1900
CCFJ325-E	KTA19-D(M)	HCM534C	325	450	60	3900	3400x1600x2100
CCFJ390-E	KTA19-D(M)	HCM534D	390	450	60	4000	3400x1600x2100
CCFJ430-E	KTA19-D(M)	HCM534E	430	450	60	4100	3400x1600x2100
CCFJ600	KT38-D(M)	HCM634H	600	400	50	7000	4100x1600x2200
CCFJ615	KT38-D(M)	HCM634G	615	450	60	7000	4100x1600x2200
CCFJ735	KTA38-D(M)	HCM634H	735	450	60	7500	4200x1600x2200
CCFJ900	KTA38-D(M)	HCM634K	900	450	60	7800	4300x1600x2200
CCFJ210	N855-DM	HCM434E	210	400	50	2850	3300x1300x1900
CCFJ250	N855-DM	HCM434F	250	400	50	3000	3300x1300x1900
CCFJ280	N855-DM	HCM534C	280	400	50	3200	3300x1300x1900
CCFJ370	K19-DM	HCM534E	370	400	50	4100	3400x1600x2100
CCFJ320	K19-DM	HCM534D	320	400	50	3900	3400x1600x2100
CCFJ405	K19-DM	HCM534E	405	400	50	4150	3400x1600x2100
CCFJ800	K38-DM	LVM634G	800	400	50	7800	4300x1600x2200
CCFJ255	N855-DM	HCM434E	255	450	60	2850	3300x1300x1900
CCFJ280	N855-DM	HCM434F	280	450	60	3000	3300x1300x1900
CCFJ385	K19-DM	HCM534E	385	450	60	4150	3400x1600x2100
CCFJ440	K19-DM	HCM534E	440	450	60	4100	3400x1600x2100
CCFJ460	K19-DM	HCM534E	460	450	60	4100	3400x1600x2100
CCFJ680	K38-DM	HCM634J	680	400	50	7600	4300x1600x2200
CCFJ745	K38-DM	HCM634H	745	450	60	7500	4200x1600x2200
CCFJ890	K38-DM	HCM634K	890	450	60	7800	4300x1600x2200

康明斯辅机



箱式电站

DCEC

东风康明斯

机组型号	柴油机型号	发电机型号	额定功率	额定电压	额定频率	机组净重	外形尺寸
D.G.SET Type	Engine Type	Generator Type	Rate Output kW	Rated Voltage V	Rated Frequency Hz	Net Weight kg	Overall Dimension (LxWxH)mm
CCFJ40	4BTA3.9-GM47	UCM224F	40	400	50	900	2000x1000x1400
CCFJ70	6BT5.9-GM83	UCM274D	70	400	50	1200	2300x1100x1400
CCFJ85	6BTA5.9-GM100	UCM274E	85	400	50	1300	2400x1100x1400
CCFJ95	6BTAA5.9-GM115	UCM274F	95	400	50	1350	2400x1100x1400
CCFJ95	6CT8.3-GM115	UCM274F	95	400	50	1550	2400x1120x1400
CCFJ135	6CTA8.3-GM155	UCM274H	135	400	50	1600	2400x1200x1500
CCFJ164	6LTAA8.9-GM200	UCDM274K	164	400	50	1700	2600x1200x1500
CCFJ55	4BTA3.9-GM65	UCM224F	55	450	60	900	2000x1000x1400
CCFJ85	6BT5.9-GM100	UCM274D	85	450	60	1200	2300x1100x1400
CCFJ100	6BTA5.9-GM120	UCM274E	100	450	60	1300	2400x1100x1400
CCFJ105	6CT8.3-GM129	UCM274E/F	105	450	60	1500/1550	2450x1120x1400
CCFJ150	6CTA8.3-GM175	UCM274H	150	450	60	1600	2400x1200x1500



SCANIA

斯堪尼亚主机



DI16M
525 - 1000 hp

SCANIA 斯堪尼亚

柴油机型号	功率	额定功率	功率转速	排放标准
Engine type	Rating	kW (hp)	rpm	Emission compliance
DI09 070M	ICFN	162 (220)	1800	IMO Tier II, EU Stage IIIA
DI09 070M	ICFN	184 (250)	1800	IMO Tier II, EU Stage IIIA
DI09 070M	ICFN	221 (300)	1800	IMO Tier II, EU Stage IIIA
DI09 070M	ICFN	257 (350)	1800	IMO Tier II, EU Stage IIIA
DI09 072M	IFN	221 (300)	2100	IMO Tier II, EU Stage IIIA
DI09 072M	IFN	257 (350)	2100	IMO Tier II, EU Stage IIIA
DI09 072M	IFN	294 (400)	2100	IMO Tier II, EU Stage IIIA
DI13 070M	ICFN	294 (400)	1800	IMO Tier II, US Tier 2, EU Stage IIIA
DI13 070M	ICFN	331 (450)	1800	IMO Tier II, US Tier 2, EU Stage IIIA
DI13 070M	ICFN	368 (500)	1800	IMO Tier II, US Tier 2, EU Stage IIIA
DI13 070M	ICFN	405 (550)	1800	IMO Tier II, US Tier 2, EU Stage IIIA

SCANIA 斯堪尼亚

柴油机型号	功率	额定功率	功率转速	排放标准
Engine type	Rating	kW (hp)	rpm	Emission compliance
DI13 072M	IFN	441 (600)	2300	IMO Tier II, US Tier 2, EU Stage IIIA
DI13 072M	Patrol craft long	478 (650)	2300	IMO Tier II, US Tier 2, EU Stage IIIA
DI13 077M	Patrol craft long	515 (700)	2300	IMO Tier II, US Tier 2, EU Stage IIIA
DI13 077M	Patrol craft short	551 (750)	2300	IMO Tier II, US Tier 2, EU Stage IIIA
DI13 078M	IFN	331 (450)	2100	IMO Tier II, US Tier 2, EU Stage IIIA
DI13 078M	IFN	368 (500)	2100	IMO Tier II, US Tier 2, EU Stage IIIA
DI13 078M	IFN	405 (550)	2100	IMO Tier II, US Tier 2, EU Stage IIIA
DI16 070M	ICFN	405 (550)	1800	IMO Tier II, US Tier 2, EU Stage IIIA
DI16 070M	ICFN	460 (625)	1800	IMO Tier II, US Tier 2, EU Stage IIIA
DI16 070M	ICFN	515 (700)	1800	IMO Tier II, US Tier 2, EU Stage IIIA
DI16 070M	ICFN	552 (750)	1800	IMO Tier II, US Tier 2, EU Stage IIIA
DI16 072M	Patrol craft long	588 (800)	2300	IMO Tier II, US Tier 2, EU Stage IIIA
DI16 072M	Patrol craft long	625 (850)	2300	IMO Tier II, US Tier 2, EU Stage IIIA
DI16 072M	Patrol craft short	662 (900)	2300	IMO Tier II, US Tier 2, EU Stage IIIA
DI16 077M*	Patrol craft long	662 (900)	2300	IMO Tier II, US Tier 2, EU Stage IIIA
DI16 077M*	Patrol craft short	736 (1000)	2300	IMO Tier II, US Tier 2, EU Stage IIIA
DI16 072M	IFN	478 (650)	2100	IMO Tier II, EU Stage IIIA
DI16 072M	IFN	515 (700)	2100	IMO Tier II, EU Stage IIIA
DI16 072M	IFN	552 (750)	2100	IMO Tier II, EU Stage IIIA
DI16 072M	IFN	588 (800)	2100	IMO Tier II, EU Stage IIIA

*) Note! Optimized for Water Jet applications. Not intended for conventional propeller use.

ICFN – Continous service: Rated power available 1 h/1 h. Unlimited h/year service time at a total load factor of 100%

IFN – Intermittent service: Intended for intermittent use where rated power is available 1 hour/3 hours period. Accumulated load factor must not exceed 80% of rated power. Unlimited h/year service time.

Patrol craft long: Intended for intermittent use where rated power is available 1 hour/6 hours period. Between full load operations engine rpm must be reduced at least 10% from max. obtained rpm. Accumulated total service time max. 2000 h/year.

Patrol craft short: Intended for intermittent use where rated power is available 1 hour/12 hours period. Between full load operations engine rpm must be re-duced at least 10% from max. obtained rpm. Accumulated total service time max. 1200 h/year.

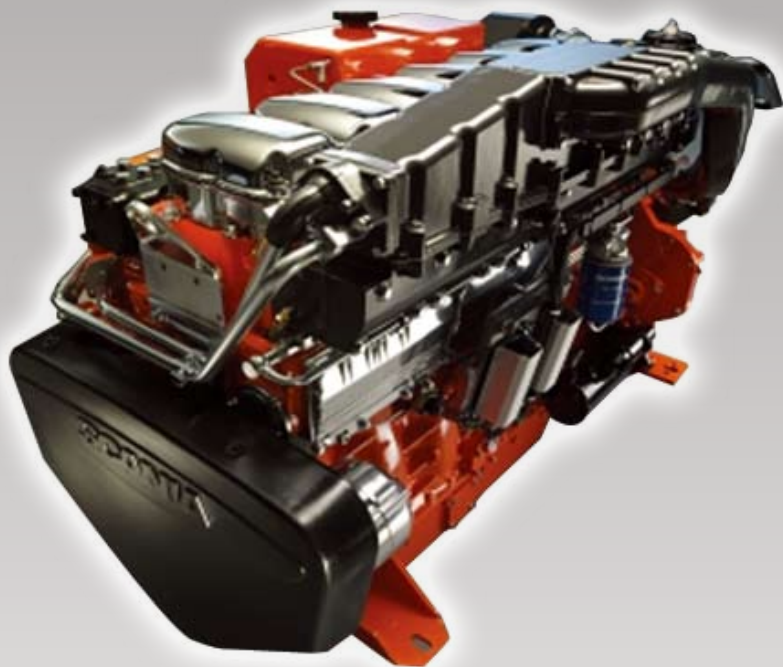
Note that the specifications are not kept in stock and can not be ordered by any printed matter routines.

All specifications may be revised without notice.



SCANIA

斯堪尼亚主机



DI13M
400 - 750 hp

SCANIA 斯堪尼亚

柴油机型号	功率	额定功率	功率转速	排放标准
Engine type	Rating	kW (hp)	rpm	Emission compliance
DI09 070M	ICFN	162 (220)	1800	IMO Tier II, EU Stage IIIA
DI09 070M	ICFN	184 (250)	1800	IMO Tier II, EU Stage IIIA
DI09 070M	ICFN	221 (300)	1800	IMO Tier II, EU Stage IIIA
DI09 070M	ICFN	257 (350)	1800	IMO Tier II, EU Stage IIIA
DI09 072M	IFN	221 (300)	2100	IMO Tier II, EU Stage IIIA
DI09 072M	IFN	257 (350)	2100	IMO Tier II, EU Stage IIIA
DI09 072M	IFN	294 (400)	2100	IMO Tier II, EU Stage IIIA
DI13 071M	ICFN	294 (400)	1800	IMO Tier II, US Tier 2, EU Stage IIIA
DI13 071M	ICFN	331 (450)	1800	IMO Tier II, US Tier 2, EU Stage IIIA
DI13 071M	ICFN	368 (500)	1800	IMO Tier II, US Tier 2, EU Stage IIIA
DI13 073M	IFN	331 (450)	2100	IMO Tier II, US Tier 2, EU Stage IIIA
DI13 073M	IFN	368 (500)	2100	IMO Tier II, US Tier 2, EU Stage IIIA
DI13 073M	IFN	405 (550)	2100	IMO Tier II, US Tier 2, EU Stage IIIA
DI16 071M	ICFN	405 (550)	1800	IMO Tier II, US Tier 2, EU Stage IIIA
DI16 071M	ICFN	460 (625)	1800	IMO Tier II, US Tier 2, EU Stage IIIA
DI16 073M	IFN	478 (650)	2100	IMO Tier II, EU Stage IIIA
DI16 073M	IFN	515 (700)	2100	IMO Tier II, EU Stage IIIA
DI16 073M	IFN	552 (750)	2100	IMO Tier II, EU Stage IIIA
DI16 073M	IFN	588 (800)	2100	IMO Tier II, EU Stage IIIA
DI16 079M	ICFN	405 (550)	1800	IMO Tier II, EU Stage IIIA
DI16 079M	ICFN	460 (625)	1800	IMO Tier II, EU Stage IIIA
DI16 079M	ICFN	515 (700)	1800	IMO Tier II, EU Stage IIIA
DI16 079M	ICFN	552 (750)	1800	IMO Tier II, EU Stage IIIA

ICFN – Continous service: Rated power available 1 h/1 h. Unlimited h/year service time at a total load factor of 100%

IFN – Intermittent service: Intended for intermittent use where rated power is available 1 hour/3 hours period. Accumulated load factor must not exceed 80% of rated power. Unlimited h/year service time.

Note that the specifications are not kept in stock and can not be ordered by any printed matter routines.



斯堪尼亚辅机



DI13 M
50Hz: 323-426 kW
60Hz: 376-426 kW



DI16 NEW
50Hz: 430-511 kW
60Hz: 468-596 kW

机组型号	柴油机型号	发电机型号	额定功率	额定电压	额定频率	机组净重	外形尺寸
D.G. SET Type	Engine Type	Generator Type	Rate Output kW	Rated Voltage V	Rated Frequency Hz	Net Weight kg	Overall Dimension (LxWxH)mm
CCFJ180	DI09 074M	HCM434D	180	400	50	2450	2400x1200x1500
CCFJ200	DI09 074M	HCM434E	200	400	50	2500	2400x1200x1500
CCFJ245	DI09 074M	HCM434F	245	400	50	2700	2700x1200x1500
CCFJ180	DI09 074M	HCM434C	180	450	60	2400	2400x1200x1500
CCFJ200	DI09 074M	HCM434D	200	450	60	2450	2400x1200x1500
CCFJ245	DI09 074M	HCM434D	245	450	60	2400	2400x1200x1500
CCFJ295	DI09 074M	HCM434F	295	450	60	2700	2700x1200x1500
CCFJ175-E	DI09 074M	HCM434D	175	400	50	2600	3000x1500x1700
CCFJ195-E	DI09 074M	HCM434E	195	400	50	2650	3000x1500x1700
CCFJ240-E	DI09 074M	HCM434F	240	400	50	2850	3200x1500x1700
CCFJ170-E	DI09 074M	UCM274H	170	450	60	2200	2800x1500x1700
CCFJ185-E	DI09 074M	UCDM274K	185	450	60	2300	2800x1500x1700
CCFJ235-E	DI09 074M	HCM434D	235	450	60	2450	3000x1500x1700

SCANIA 斯堪尼亚

机组型号	柴油机型号	发电机型号	额定功率	额定电压	额定频率	机组净重	外形尺寸
D.G. SET Type	Engine Type	Generator Type	Rate Output kW	Rated Voltage V	Rated Frequency Hz	Net Weight kg	Overall Dimension (LxWxH)mm
CCFJ285-E	DI09 074M	HCM434F	285	450	60	2700	3200x1500x1700
CCFJ300	DI13 074M	HCM534C	300	400	50	2900	2800x1300x1500
CCFJ345	DI13 074M	HCM534D	345	400	50	3000	2800x1300x1500
CCFJ395	DI13 074M	HCM534E	395	400	50	3150	2800x1300x1500
CCFJ345	DI13 074M	HCM534C	345	450	60	2900	2800x1300x1500
CCFJ395	DI13 074M	HCM534D	395	450	60	3000	2800x1300x1500
CCFJ290-E	DI13 074M	HCM534C	290	400	50	2900	3300x1500x1800
CCFJ340-E	DI13 074M	HCM534D	340	400	50	3000	3300x1500x1800
CCFJ385-E	DI13 074M	HCM534E	385	400	50	3200	3300x1500x1800
CCFJ330-E	DI13 074M	HCM534C	330	450	60	2900	3300x1500x1800
CCFJ375-E	DI13 074M	HCM534C	375	450	60	2900	3300x1500x1800
CCFJ400	DI16 074M	HCM534E	400	400	50	3700	2700x1300x1500
CCFJ420	DI16 074M	HCM534E	420	400	50	3700	2700x1300x1500
CCFJ445	DI16 074M	HCM534F	445	400	50	3800	2800x1300x1500
CCFJ475	DI16 074M	HCM634G	475	400	50	4100	2900x1300x1500
CCFJ435	DI16 074M	HCM534E	435	450	60	3700	2700x1300x1500
CCFJ475	DI16 074M	HCM534E	475	450	60	3700	2700x1300x1500
CCFJ515	DI16 074M	HCM534F	515	450	60	3800	2800x1300x1500
CCFJ555	DI16 074M	HCM534F	555	450	60	3800	2800x1300x1500
CCFJ390-E	DI16 074M	HCM534E	390	400	50	3800	3400x1650x2000
CCFJ405-E	DI16 074M	HCM534E	405	400	50	3800	3400x1650x2000
CCFJ435	DI16 074M	HCM534F	435	400	50	3850	3500x1650x2000
CCFJ465	DI16 074M	HCM534F	465	400	50	3850	3500x1650x2000
CCFJ410	DI16 074M	HCM534D	410	450	60	3600	3200x1650x2000
CCFJ455	DI16 074M	HCM534E	455	450	60	3800	3400x1650x2000
CCFJ490	DI16 074M	HCM534E	490	450	60	3800	3400x1650x2000
CCFJ530	DI16 074M	HCM534F	530	450	60	3850	3500x1650x2000

帕金斯



PERKINS 帕金斯

机组型号	柴油机型号	发电机型号	额定功率	额定电压	额定频率	机组净重	外形尺寸
D.G. SET Type	Engine Type	Generator Type	Rate Output kW	Rated Voltage V	Rated Frequency Hz	Net Weight kg	Overall Dimension (LxWxH)mm
CCFJ10	415GM	PM044H	10	400	50	550	1100x1000x1500
CCFJ12	415GM	PM044H	12	450	60	550	1100x1000x1500
CCFJ15.5	422GM	PM144E	15.5	400	50	650	1300x1000x1500
CCFJ18.5	422GM	PM144E	18.5	450	60	650	1300x1000x1500
CCFJ21.5	422TGM	PM144H	21.5	400	50	700	1300x1000x1500
CCFJ26	422TGM	PM144H	26	450	60	700	1300x1000x1500
CCFJ37.5	4.4GM	UCM224E	37.5	400	50	1050	1700x1000x1500
CCFJ43	4.4GM	UCM224E	43	450	60	1050	1700x1000x1500
CCFJ50	4.4TGM	UCM224F	50	400	50	1100	1700x1000x1500
CCFJ56.5	4.4TGM	UCM224F	56.5	450	60	1100	1700x1000x1500
CCFJ67	4.4TWGM	UCM274D	67	400	50	1200	1700x1000x1500
CCFJ74	4.4TWGM	UCM274C	74	450	60	1150	1700x1000x1500
CCFJ84.5	4.4TW2GM	UCM274E	84.5	400	50	1250	1800x1000x1500
CCFJ96.5	4.4TW2GM	UCM274E	96.5	450	60	1250	1800x1000x1500
CCFJ83.5	6TG2AM	UCM274E	83.5	400	50	1350	2050x1000x1500
CCFJ99.5	6TG2AM	UCM274E	99.5	450	60	1350	2050x1000x1500
CCFJ114	6TWGM	UCM274G	114	400	50	1500	2100x1000x1500
CCFJ132.5	6TWGM	UCM274G	132.5	450	60	1500	2100x1000x1500

河柴



机组型号	柴油机型号	发电机型号	额定功率	额定电压	额定频率	机组净重	外形尺寸
D.G. SET Type	Engine Type	Generator Type	Rate Output kW	Rated Voltage V	Rated Frequency Hz	Net Weight kg	Overall Dimension (LxWxH)mm
CCFJ105	TD234V6	UCM274F	105	400	50	2200	2300x1200x1900
CCFJ145	TD234V8	UCDM274K	145	400	50	2550	2600x1200x1900
CCFJ165	TBD234V6	HCM434C	168	400	50	2500	2600x1200x1900
CCFJ230	TBD234V8	HCM434E	232	400	50	3000	2800x1300x1900
CCFJ345	TBD234V12	HCM534D	348	400	50	4000	3300x1300x1900
CCFJ120	TD234V6	UCM274F	120	450	60	2200	2300x1200x1900

HND 河柴

机组型号	柴油机型号	发电机型号	额定功率	额定电压	额定频率	机组净重	外形尺寸
D.G. SET Type	Engine Type	Generator Type	Rate Output kW	Rated Voltage V	Rated Frequency Hz	Net Weight kg	Overall Dimension (LxWxH)mm
CCFJ170	TD234V8	UCM274H	170	450	60	2450	2500x1200x1900
CCFJ205	TBD234V6	UCDM274K	205	450	60	2350	2500x1200x1900
CCFJ275	TBD234V8	HCM434E	275	450	60	3000	2800x1300x1900
CCFJ415	TBD234V12	HCM534D	415	450	60	4000	3300x1300x1900
CCFJ185-E	TBD234V6	HCM434D	185	400	50	2600	2600x1200x1900
CCFJ250-E	TBD234V8	HCM434F	250	400	50	3150	3000x1300x1900
CCFJ380-E	TBD234V12	HCM534E	380	400	50	4150	3300x1300x1900
CCFJ215-E	TBD234V6	UCDM274K	215	450	60	2350	2500x1200x1900
CCFJ295-E	TBD234V8	HCM434F	295	450	60	3150	3000x1300x1900
CCFJ455-E	TBD234V12	HCM534E	455	450	60	4000	3300x1300x1900
CCFJ345	TBD604BL6	HCM636J	345	450	60	5000	3400x1300x2200
CCFJ450	TBD604BL6	HCM636K	450	450	60	5200	3400x1300x2200
CCFJ420	TBD604BL6	HCM534E	420	400	50	4500	3200x1300x2200
CCFJ515	TBD604BL6	HCM634G	515	400	50	5000	3400x1300x2200
CCFJ505	TBD604BL6	HCM534E	505	450	60	4500	3200x1300x2200
CCFJ560	TBD604BL6	HCM634G	560	450	60	5000	3400x1300x2200
CCFJ790	TBD620V8	LVM634G	790	400	50	7100	3600x1500x2200
CCFJ1200	TBD620V12	PM734F	1200	400	50	9500	4100x1600x2200
CCFJ1435	TBD620V16	PM734G	1436	400	50	11000	4700x1600x2200
CCFJ860	TBD620V8	LVM634F	860	450	60	6700	3500x1500x2200
CCFJ1300	TBD620V12	PM734E	1300	450	60	9000	3700x1600x2200
CCFJ1740	TBD620V16	PM734G	1740	450	60	11000	4700x1600x2200
CCFJ810-E	TBD620V8	LVM634G	810	400	50	8000	4600x1500x2200
CCFJ1240-E	TBD620V12	PM734F	1240	400	50	11000	5100x1500x2200
CCFJ875-E	TBD620V8	LVM634G	875	450	60	8000	4600x1500x2200
CCFJ1340-E	TBD620V12	PM734E	1340	450	60	10500	5000x1500x2200

产品介绍 Product Introduction

电推产品 Electrical products



南通港闸2000方挖泥船



轴带发电机

核电产品 Nuclear power products

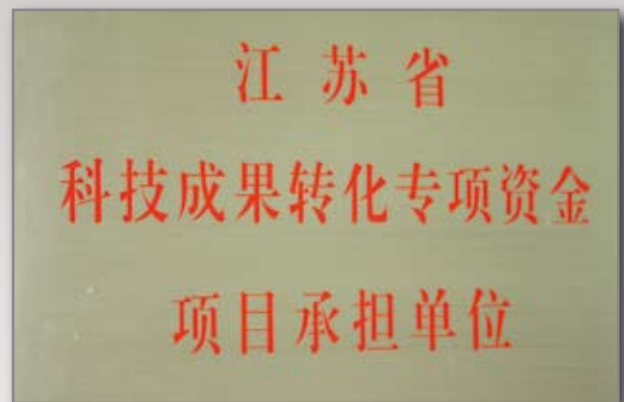


5000kW/6300V/1000RPM
核级应急机组发电机



ZFC6 354-44E-R

企业荣誉 Enterprise honor



镇江中船现代发电设备有限公司

ZHENJIANG CHINA MARINE-XIANDAI GENERATING Co.,Ltd.

地址：江苏省镇江市丁卯片区潘宗路

电话：0511-88890858 传真：0511-88890718

邮编：212009

网址：<http://zjcmxd.cssc.net.cn>

Add: Panzong Road, Dingmao Section, Zhenjiang, Jiangsu

Tel: 0511-88890858 Fax: 0511-88890718

Zip: 212009

Website: <http://zjcmxd.cssc.net.cn>